



# Flu Watch

MMWR Week 23  
June 2 - June 8, 2013

Summer Edition

South Carolina Department of Health and Environmental Control  
Division of Acute Disease Epidemiology

*Contents*

*Summary.....1*

*ILINet.....2*

*Positive Confirmatory Tests.....3*

*Positive rapid tests.....4*

*Hospitalizations and deaths....4*

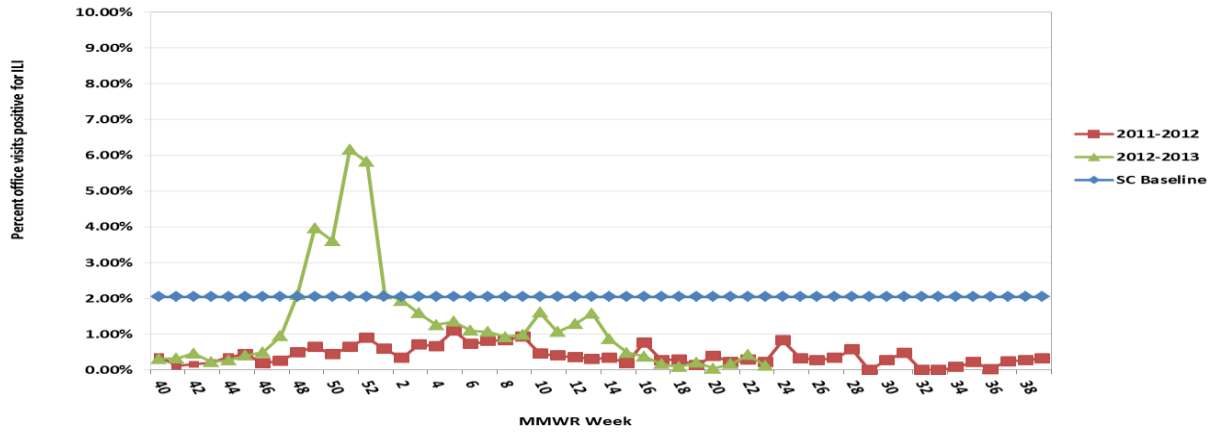
**Current influenza activity level: NO ACTIVITY**

*All data are provisional and may change as new reports are received.*

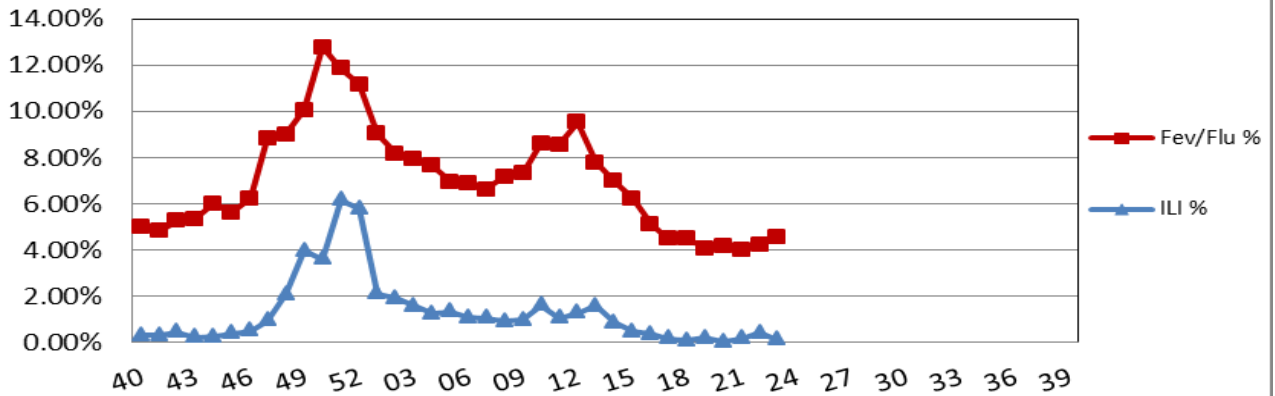
**ILI Activity, Positive Confirmatory Tests, Influenza Associated Hospitalizations and Deaths, and Positive Rapid Tests**

	<i>Previous week</i>	<i>Current week</i>	▲	Cumulative (9/30/12-6/8/13)
Visits for ILI to ILINet providers (%)	.42	.12	▼ .30	NA
Positive confirmatory tests	0	0	0	1178
Lab confirmed flu hospitalizations	0	0	0	1720
Lab confirmed flu deaths	0	0	0	46
Positive rapid tests	10	17	▲ 7	58,709

**Percentage of Visits for Influenza-like Illness (ILI) Reported by Sentinel Providers in South Carolina  
2011-2012 and 2012-2013 Influenza Seasons**

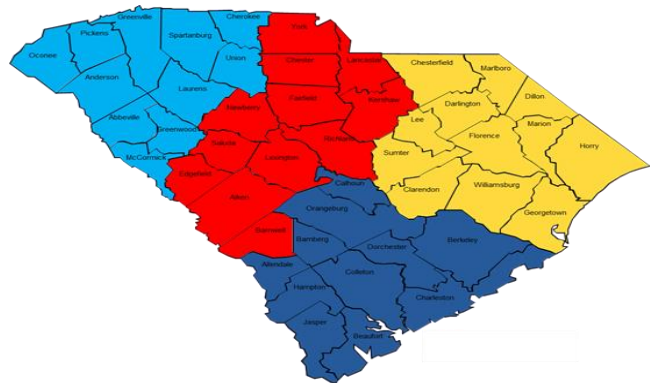


**SC Fever Flu Percentage Compared to ILI Percentage  
September 30, 2012 - June 8, 2013**

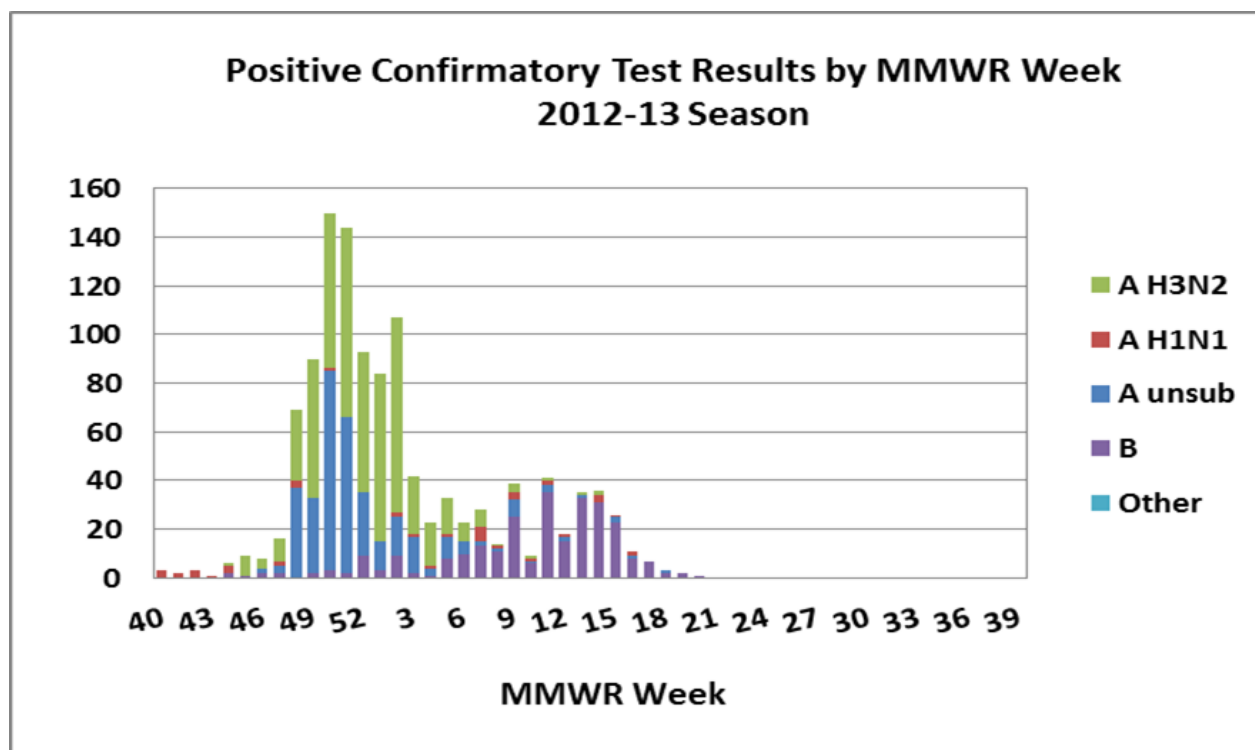


**ILI Percentage by Geographic Region**

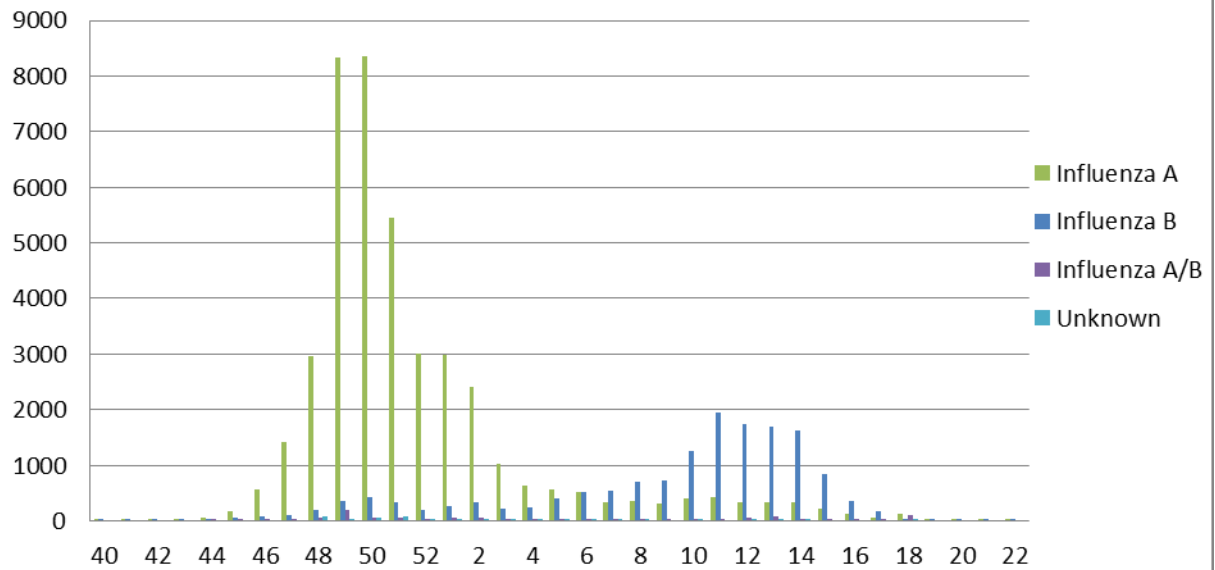
Geographic Region	ILI %	# of Reporters
Upstate	.04	5
Midlands	.39	4
Pee Dee	0	1
Low Country	NA	0



<i>Positive confirmatory influenza test results* Cumulative (09/30/12 – 6/8/13)</i>		
	<b>BOL</b>	<b>Other clinical labs</b>
<b>Number of specimens tested</b>	557	NA
<b>Number of positive specimens</b>	319 (57.3%)	859
<b>Influenza A unsubtype</b>		325 (37.8%)
<b>Influenza A H1N1</b>	24 (7.5%)	19 (2.2)
<b>Influenza A H3N2</b>	245 (76.8%)	311 (36.2%)
<b>Influenza B</b>	50 (15.7%)	201 (23.4%)
<b>Other</b>		3 (.35%)



## Positive Rapid Tests by MMWR Week and Type



## Laboratory Confirmed Influenza Case rate/100,000 Hospitalizations (n=1720) and Deaths (n=46) by age group September 30, 2012 - June 8, 2013

