

Influenza Activity



Overall, there was no change in influenza activity this week.

Influenza Indicators

Influenza Indicator	Change from Previous Week
Lab-confirmed tests	No change
ILI Percent	No change
Hospitalizations	Decreased

Regional Influenza Activity



No change



No change



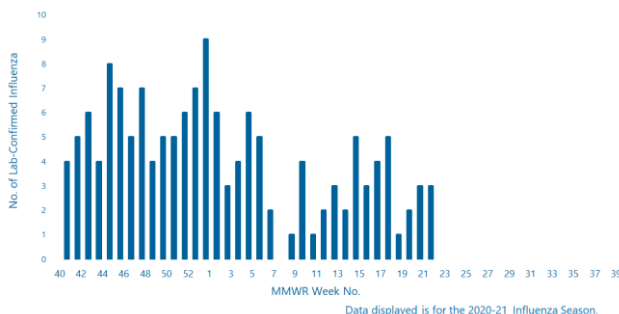
No change



No change

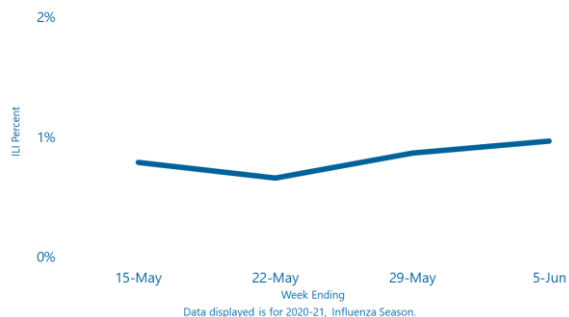
Virologic Surveillance

This week **3** lab-confirmed tests were reported. In the current flu season, there have been **147** lab-confirmed tests reported.



Influenza-Like Illness Surveillance

The percent of patient visits to sentinel providers for an influenza-like illness (ILI) was **1.0%**, which is **below** South Carolina's baseline (**3.6%**). The ILI activity level overall was **minimal**.



Influenza-Associated Hospitalizations

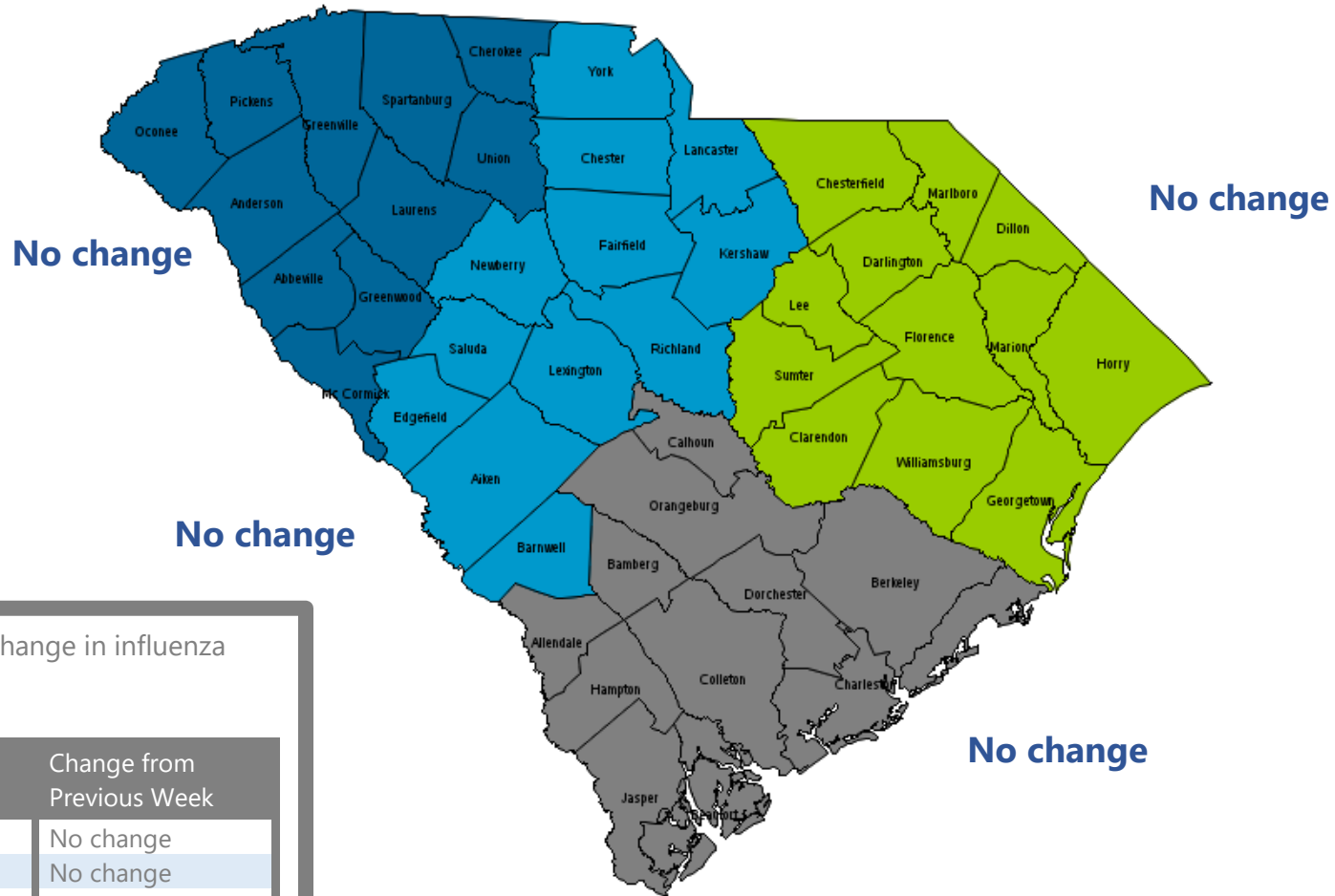
This week **0** influenza-associated hospitalizations were reported by **27** hospitals. The cumulative hospitalization rate is **3.2 per 100,000**. In the current flu season, there have been **161** influenza-associated hospitalizations.

Influenza-Associated Deaths

This week **0** influenza-associated deaths were reported. The cumulative mortality rate is **0.4 per 100,000**. In the current flu season, there have been **18** influenza-associated deaths.

Influenza Activity*

In the 4 Public Health Regions, activity showed



Overall there was no change in influenza activity statewide.

Influenza Indicator	Change from Previous Week
Lab-confirmed tests	No change
ILI Percent	No change
Hospitalizations	Decreased

*Indicators for assessing influenza activity include: lab-confirmed tests, ILI percent, and hospitalizations.

Virologic Surveillance

Lab-Confirmed Influenza Cases by Influenza Type to Date*

Influenza Type	No. of Cases (%)				
	This Week	2020-21	2019-20	2018-19	5 season average
Overall	3	147	6725	4740	3760
Influenza A	2(66.7)	48(32.7)	4730(70.3)	4577 (96.6)	2886(76.9)
A(H3)	--	--	40(0.8)	593(13.0)	330(11.4)
A(H1N1)	--	2(4.2)	1121(23.7)	459(10.0)	491(17.0)
A(NS)**	2(100.0)	46(95.8)	3569(75.5)	3525(77.0)	2065(71.6)
Influenza B	1(33.3)	94(63.9)	1986(29.5)	150(3.2)	874(23.2)
B (Victoria)	--	--	249(12.5)	3(2.0)	51(5.8)
B(Yamagata)	--	--	6(0.3)	--	12(1.4)
B (LND)+	1(100.0)	94(100.0)	1731(87.2)	147(98.0)	811(92.8)
Influenza Virus Coinfection [§]	0(0.0)	5(3.4)	9(0.1)	13(0.3)	N/A
Influenza/SARS-CoV-2 Coinfection [¶]	0(0.0)	15(13.8)	0(0.0)	N/A	N/A

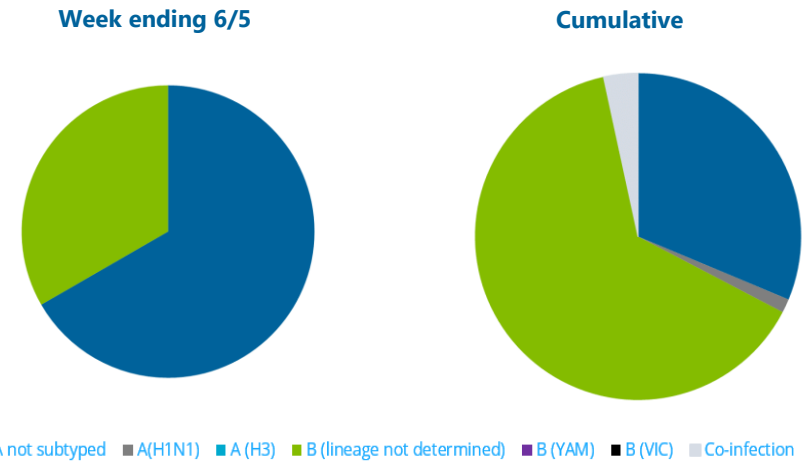
*Data presented from previous influenza seasons represents the data from that season through the same week as the current season. Nationally, the influenza season begins with MMWR week 40 and ends with MMWR week 39. The 2020-21 influenza season began on September 27, 2020 and will end on October 3, 2021.

**NS – not subtyped +LND – lineage not determined

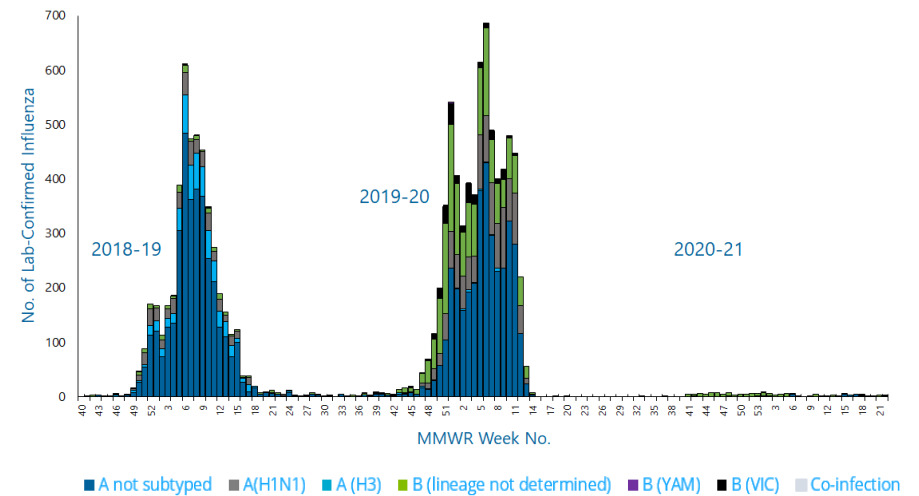
[§]Cases with more than one influenza A subtype in the same sample or with influenza A and B viral types in the same sample simultaneously.

[¶]Lab-confirmed influenza cases who also tested positive for SARS-CoV-2 virus from specimens collected on the same date.

Laboratory-Confirmed Influenza Cases, by Virus Type



Laboratory-Confirmed Influenza Cases, 2018-19 Season to Present



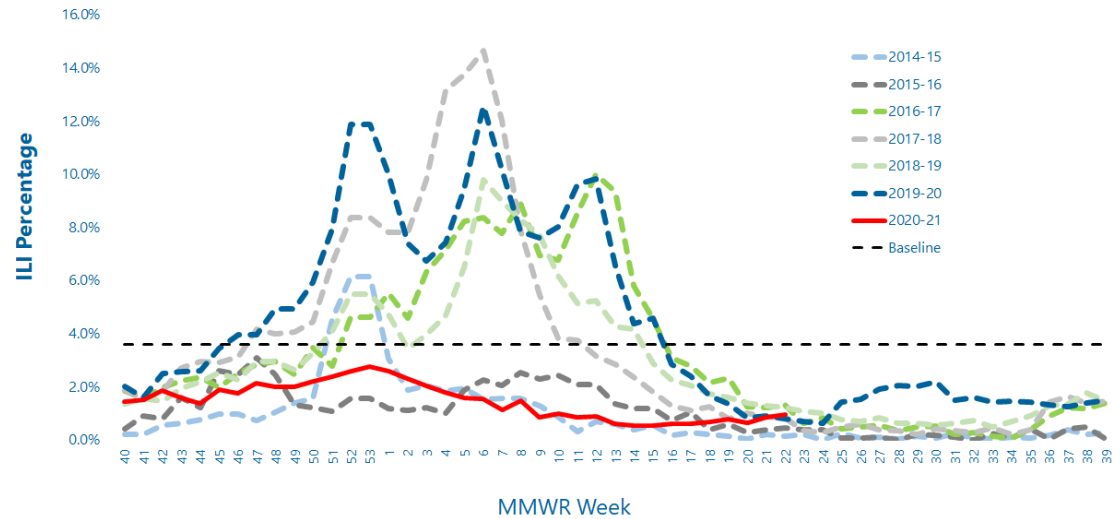
Influenza-Like Illness (ILI) Surveillance

This week, the ILI activity level was **minimal** and **1.0%** of patient visits to SC ILINet providers were attributed to an influenza-like illness. This is **below** the state baseline of **3.6%**.

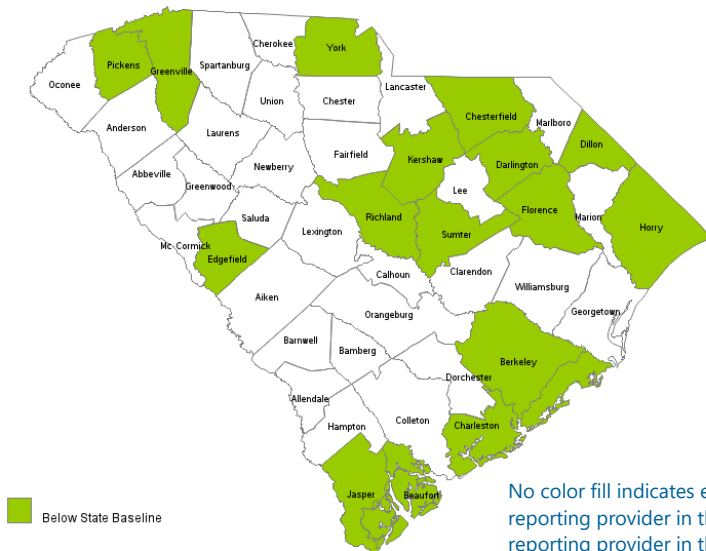
Reports were received from providers in **16** counties, representing all DHEC Public Health regions.

ILI percentage is dependent upon the number of reporting providers and/or can vary by disease activity or the number of providers submitting reports.

Percentage of Influenza-like Illness (ILI) Visits Reported by Sentinel Providers for Past and Current Seasons

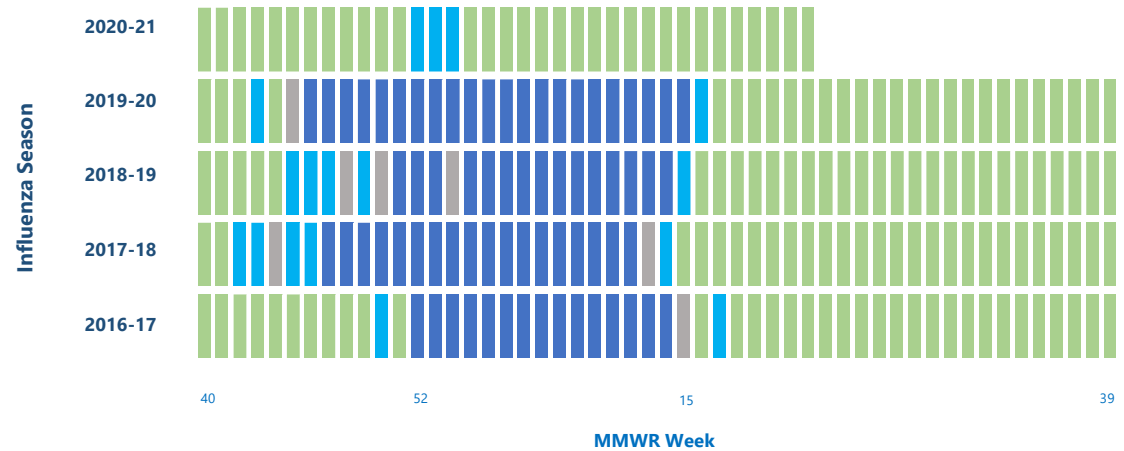


County ILI Percent



No color fill indicates either no reporting provider in the county or the reporting provider in the county did not participate for the week.

State ILI Activity Level by MMWR Week, 2016-17 Influenza Season to Present



ILI ACTIVITY LEVELS: **MINIMAL** **LOW** **MODERATE** **HIGH**

Influenza-Associated Hospitalizations And Deaths

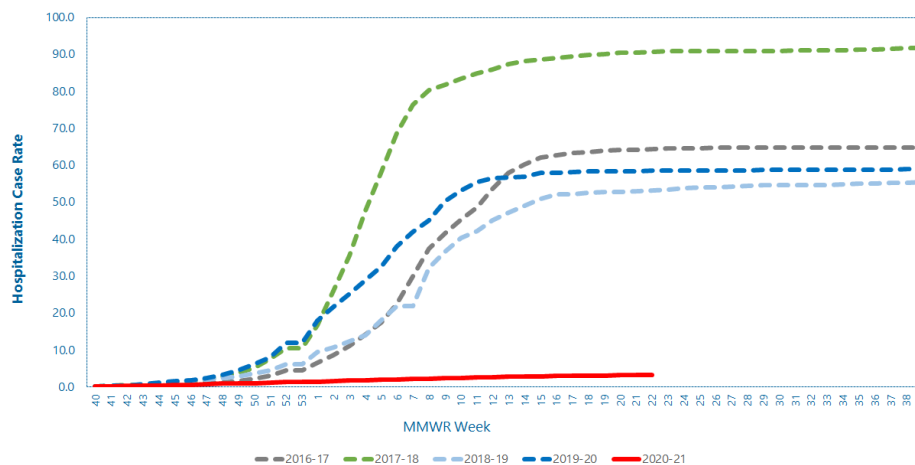
Influenza-Associated Hospitalizations by Age Group*

Influenza Season	No. of Hospitalizations (Rate)					
	Overall	Ages 0-4	Ages 5-17	Ages 18-49	Ages 50-64	Ages 65+
This Week	0(0.0)	--	--	--	--	--
2020-21	161(3.2)	2(0.7)	--	47(2.3)	36(3.6)	76(8.7)
2019-20	2995(59.6)	160(54.5)	145(17.9)	626(30.4)	848(85.0)	1216(140.6)
2018-19	2706 (54.6)	123(42.1)	127(15.8)	414(20.3)	667(67.3)	1375(165.8)
5 season average	2907(59.3)	149(51.0)	134(16.8)	481(23.7)	720(73.4)	1423(178.2)

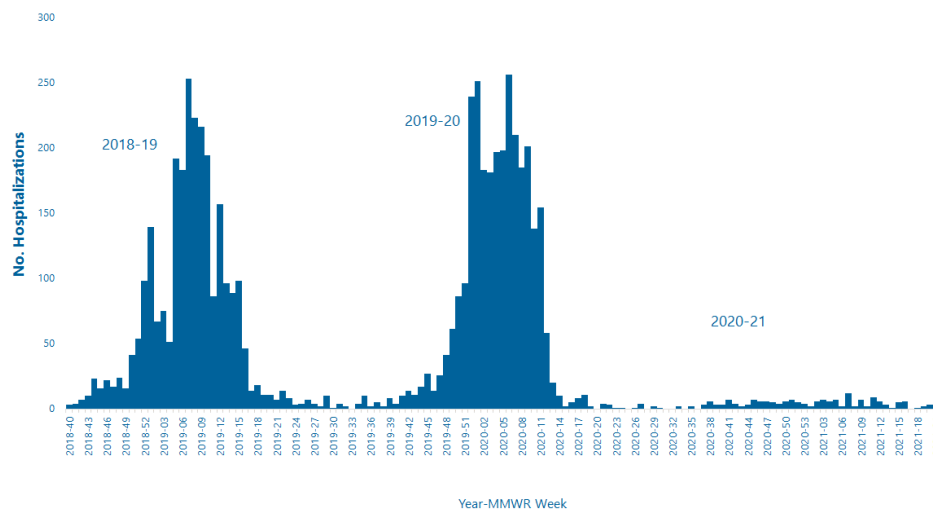
Influenza-Associated Deaths by Age Group*

Influenza Season	No. of Deaths (Rate)					
	Overall	Ages 0-4	Ages 5-17	Ages 18-49	Ages 50-64	Ages 65+
This Week	0(0.0)	--	--	--	--	--
2020-21	18(0.4)	--	--	2(0.1)	2(0.2)	14(1.6)
2019-20	137(2.7)	--	1(0.1)	24(1.2)	36(3.6)	76(8.7)
2018-19	103(2.0)	2(0.7)	1(0.1)	7(0.3)	26(2.6)	67(7.7)
5 season average	133(2.6)	1(0.3)	1(0.1)	15(0.7)	29(2.8)	87(10.1)

Cumulative Hospitalization Rate for Past and Current Seasons



Reported Influenza-Associated Hospitalizations, 2018-19 Season to present



Influenza-Associated Deaths by Region

