

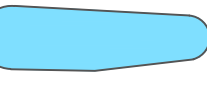


LEGEND

	CORPS JURISDICTIONAL WETLANDS--1
	CORPS JURISDICTIONAL TRIBUTARIES--1
	SEDIMENT BASINS W/DIVERSIONS--2

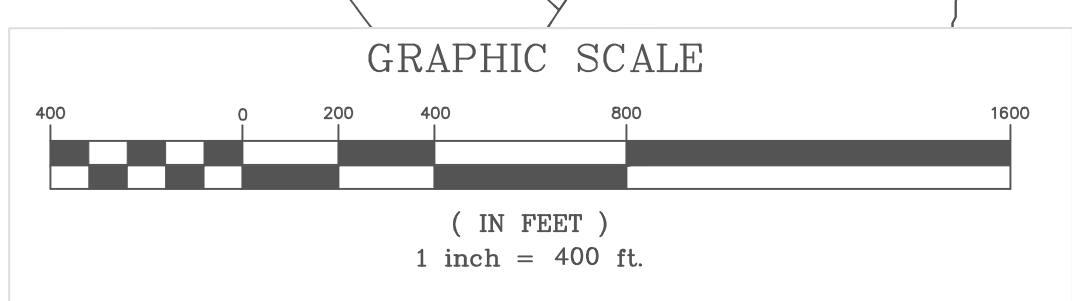
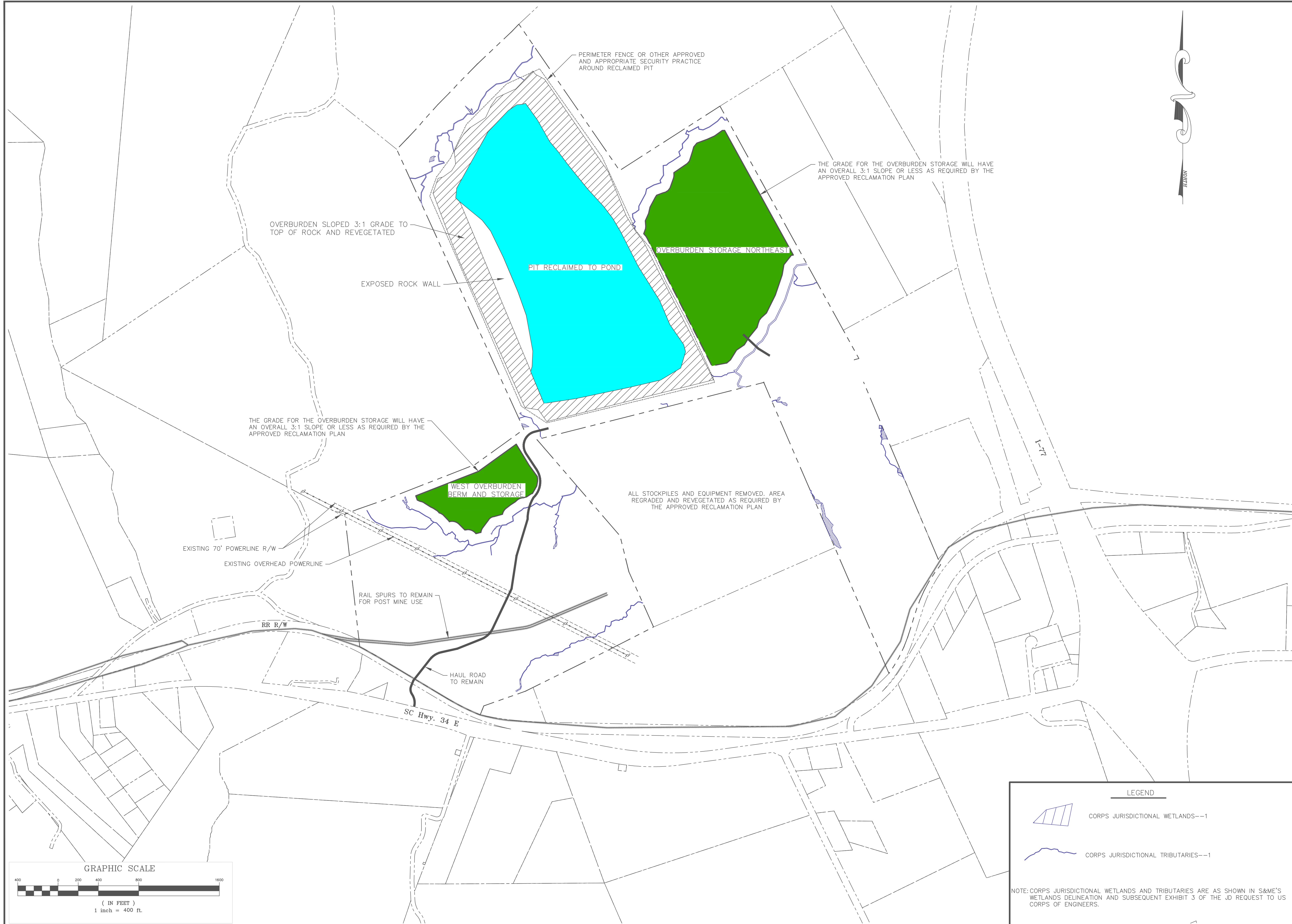
1. CORPS JURISDICTIONAL WETLANDS AND TRIBUTARIES ARE AS SHOWN IN S&ME'S WETLANDS DELINEATION AND SUBSEQUENT EXHIBIT 3 OF THE JD REQUEST TO US CORPS OF ENGINEERS.
 2. SEDIMENT BASINS AND DIVERSIONS LOCATIONS ARE AS PROVIDED BY S&ME IN THE EROSION AND SEDIMENT CONTROL PLAN.

By	Date	Description

Kennedy Consulting Services, LLC
 Craig Kennedy, P.G.
KCS
 Office: 403 Seaside Court, Lexington, SC 29073 • Tel: 803.399.1133
 Mail: P.O. Box 364, Irmo, SC 29063 • Fax: 803.960.2562 • craigkennedy_kcs@gmail.com

Fairfield I-77 Development
 Mine Map
 Prepared for
Luck Stone Corporation
 Fairfield County, South Carolina

Project No.: KCS 21-144
Date: 02-10-21
Approved by: RCK
Drawn by: B.C.
Scale: 1"=400'
Sheet No. 1 of 3



LEGEND

- CORPS JURISDICTIONAL WETLANDS--1
- CORPS JURISDICTIONAL TRIBUTARIES--1

NOTE: CORPS JURISDICTIONAL WETLANDS AND TRIBUTARIES ARE AS SHOWN IN S&M'S WETLANDS DELINEATION AND SUBSEQUENT EXHIBIT 3 OF THE JD REQUEST TO US CORPS OF ENGINEERS.

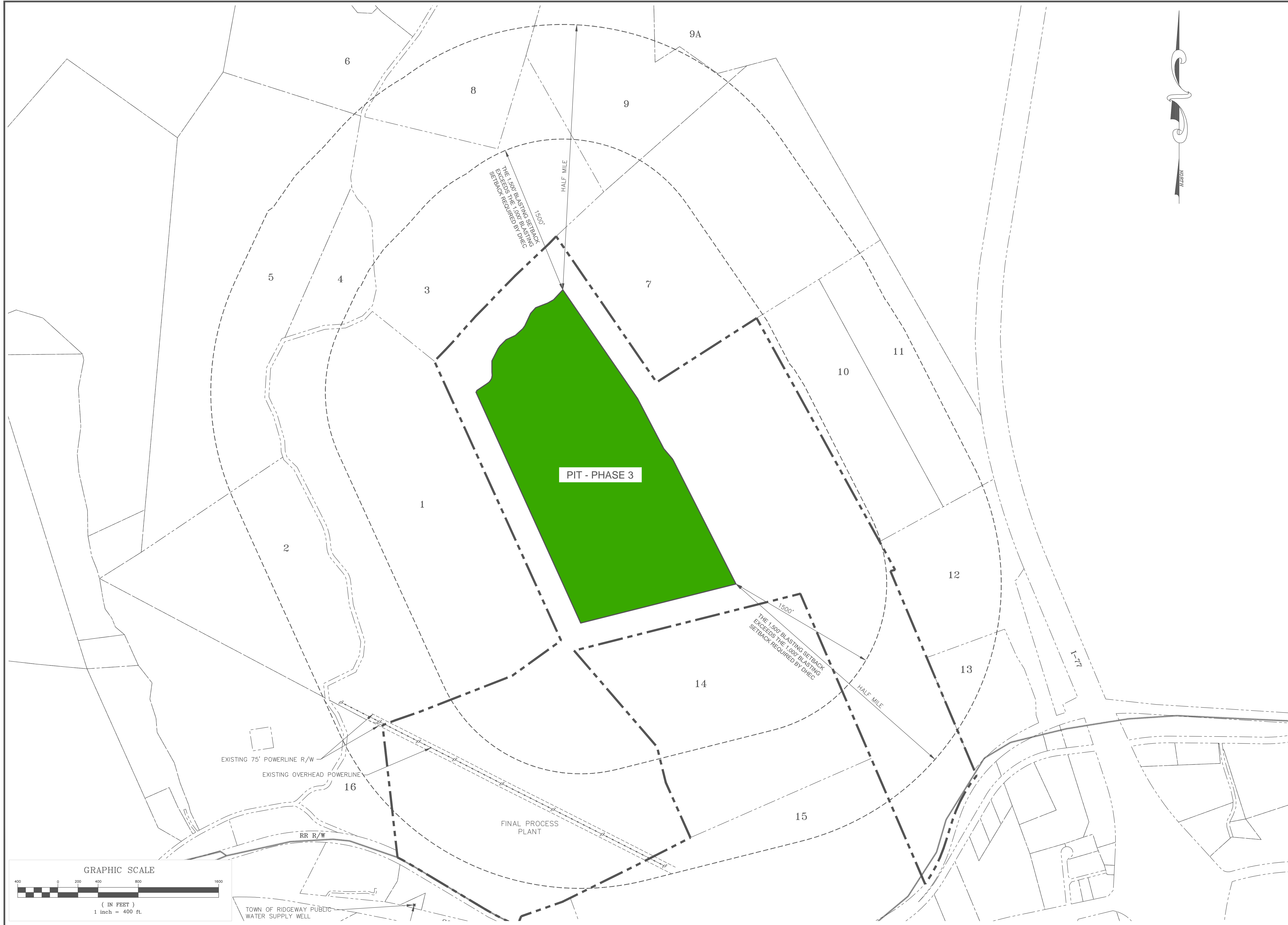
REVISIONS

Date	By	Description

Kennedy Consulting Services, LLC
 Craig Kennedy, P.G.
KCS
 Office: 403 Seaside Court, Lexington, SC 29073 • Tel: 803.999.1133
 Mail: P.O. Box 364, Irmo, SC 29063 • Fax: 803.960.2562 • craigkennedy_KCS@gmail.com

Fairfield I - 77 Development
 Reclamation Map
 Prepared for
Luck Stone Corporation
 Fairfield County - South Carolina

Project No.: KCS 21-144
Date: 03-16-21
Approved by: RCK
Drawn by: B.C.
Scale: 1"=400'



REVISIONS

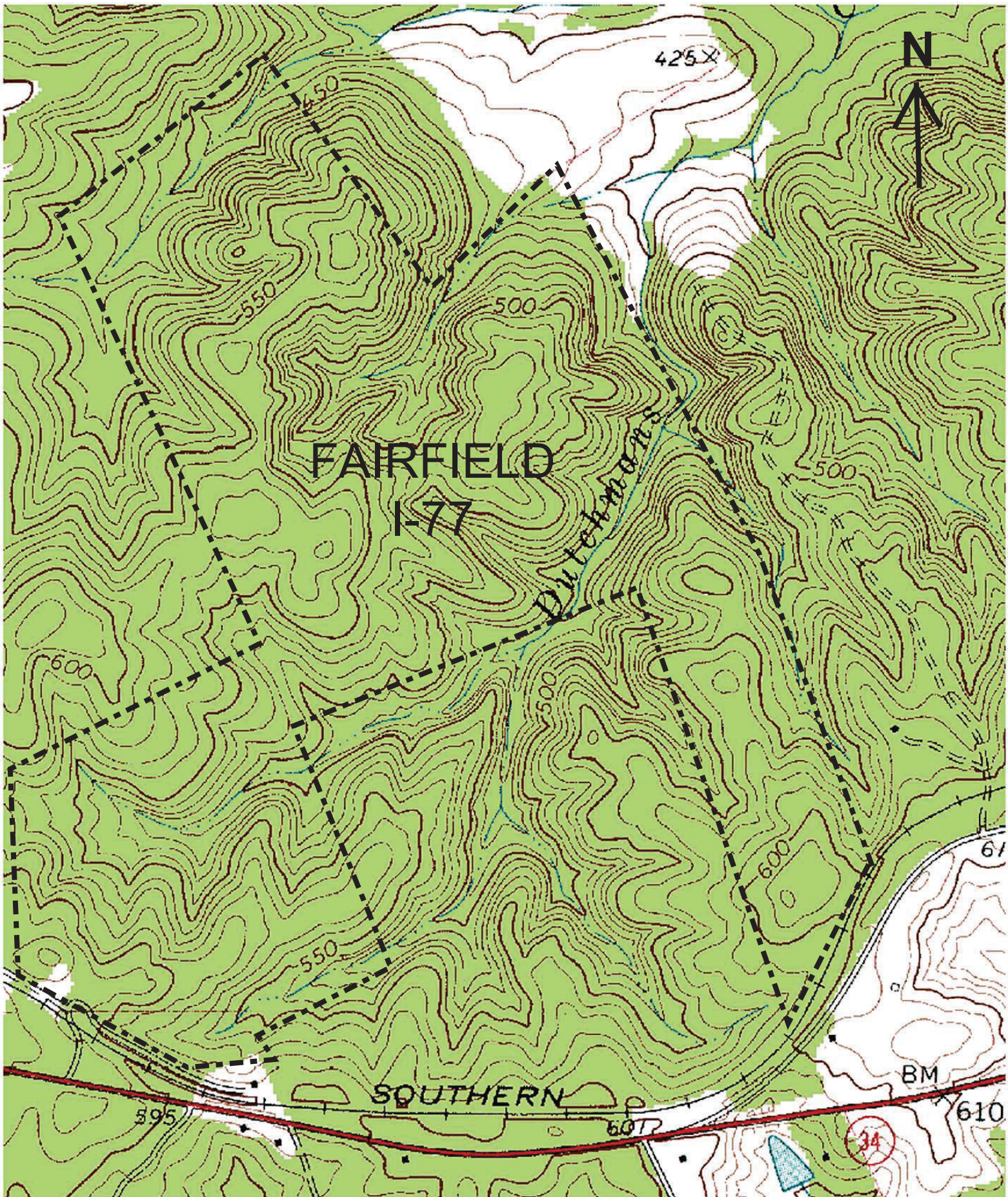
Date	By	Description

Kennedy Consulting Services, LLC
 Craig Kennedy, P.G.
KCS
 Office: 403 Seaside Court, Lexington, SC 29073 • Cell: 803-960-2562 • Mail: P.O. Box 364, Irmo, SC 29063
 Fax: 803-397-1133 • Email: craigkennedy.kcs@gmail.com

Fairfield I - 77 Development
 Pre-Blast Survey Map
 Prepared for
Luck Stone Corporation
 Fairfield County - South Carolina

Project No.: KCS 21-144
 Date: 03-16-21
 Approved by: RCK
 Drawn by: B.C.
 Scale: 1"=400'

Sheet No.
3
 of
3



Date - March 16, 2021
Scale 1" = 815'

Fairfield I-77 Development
Luck Stone Corporation

USGS Topographic Map
Winnsboro Mills 7.5'