

Proposed Application - Mine Permit I-002310 Sassafras Mine **PUBLIC HEARING**



To avoid echoing or feedback, all lines are muted.



At the end of the presentation, we will unmute and call upon those who signed up to speak.



This virtual meeting will be recorded and posted on our webpage.

Option to Call In

If you are experiencing audio problems, join the virtual meeting by phone:

Phone number: **1 (864) 558-7311**

Access Code: **149 242 369#**



Exits the hearing. (If you accidentally exit the hearing, you can rejoin.)

DON'T WAIT UNTIL IT'S TOO LATE.

Vaccination is the best way
to protect you, your family
and your community.



COVID-19 Vaccine Information Line
1-866-365-8110

www.scdhec.gov/vaxfacts



Proposed Application Sassafras Mine

Mine Operating Permit
Application I-002310

Dorchester County
PUBLIC HEARING



Agenda

- Gathering Time and Instructions for Participating Remotely
- Opening Remarks
- DHEC Overview of Sassafras Mine Permit Application
- Public Comments
- Closing Remarks
- Hearing Adjourned

Topics of Tonight's Presentation

- Permit Application for the Proposed Sassafras Mine
- Reclamation of the Mine Operation
- Common Concerns
- Review of Comments
- Final Decision Process
- Notification of Final Decision

Sassafras Timber, LLC
Sassafras Mine I-002310
Access from Delemar Highway

DELEMAR HWY

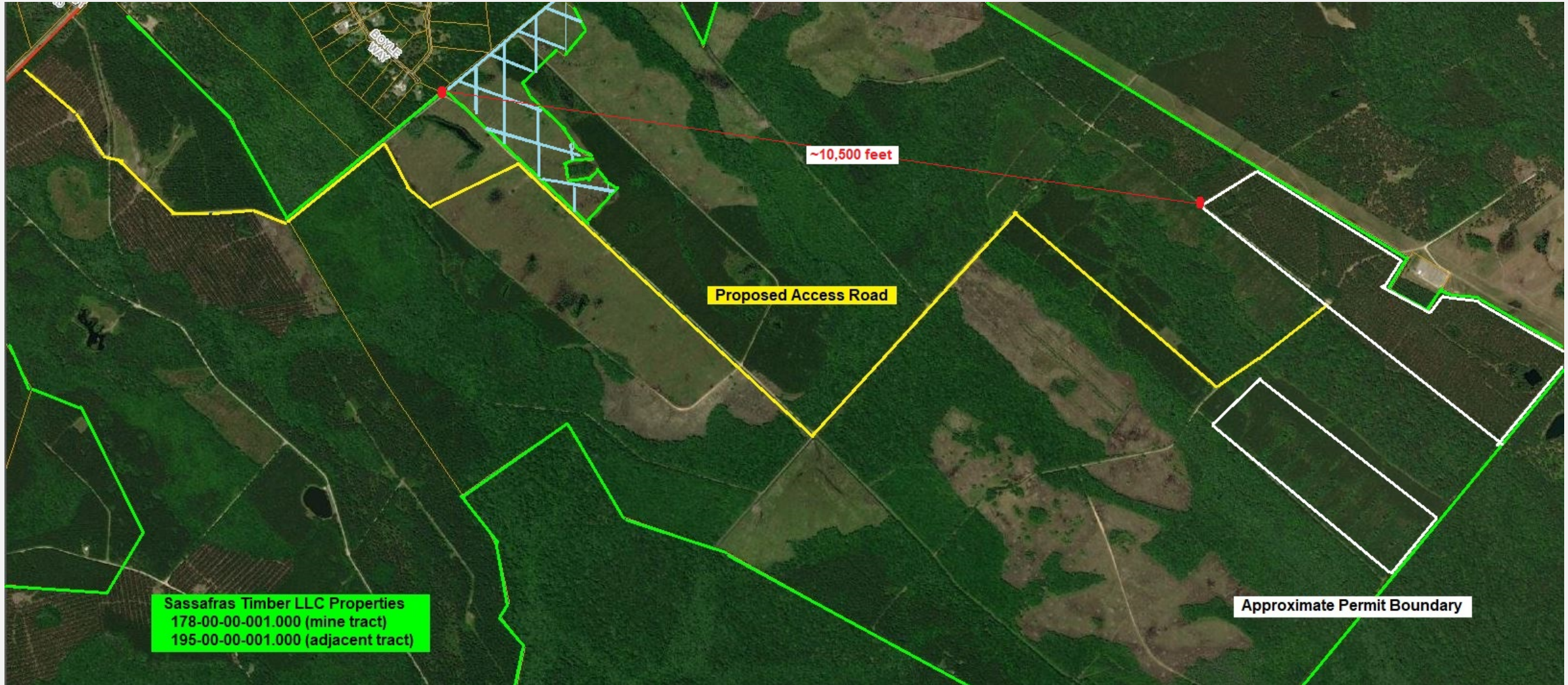
DORCHESTER RD

ASHLEY RIVER RD

PROPOSED ACCESS

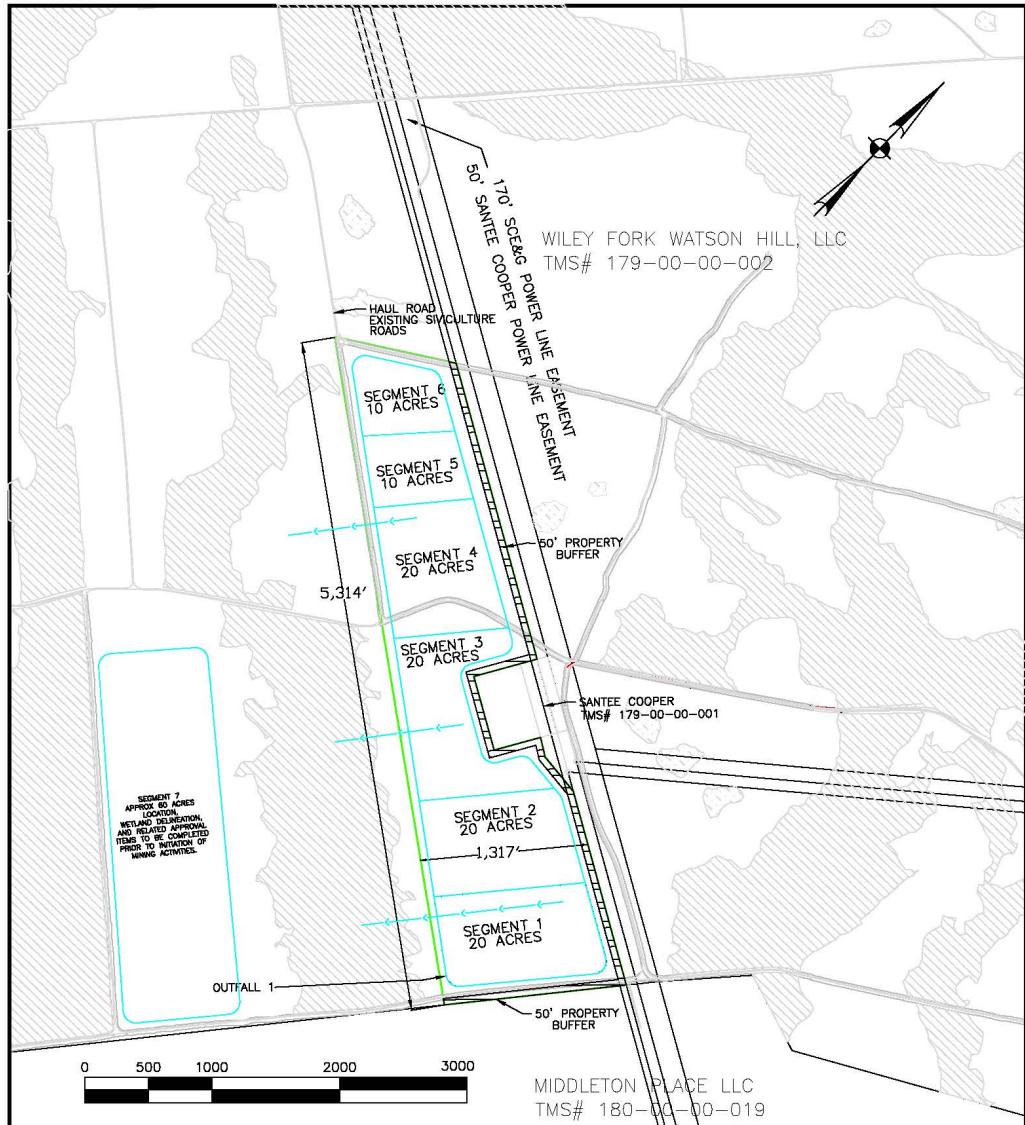
MINE SEGMENTS

Location Overview



Proposed Application

- 2603-acre tract owned by operator
- 171.5 acres for proposed mining:
 - 160.0 acres affected by excavation
 - 3.0 acres roads
 - 8.5 acres of buffer
- Mined Material: sand, sand/clay, and topsoil
- Depth: 20 feet
- Processing: material will be excavated and loaded directly onto trucks
- No blasting
- Water will be pumped from the excavation
 - mixture of stormwater and groundwater
 - discharges are regulated by NPDES permit



MINE MAP
PROJECT #: 01-4482 DATE: 07/10/20
CREATED BY: JRD REVISED: 2/23/21

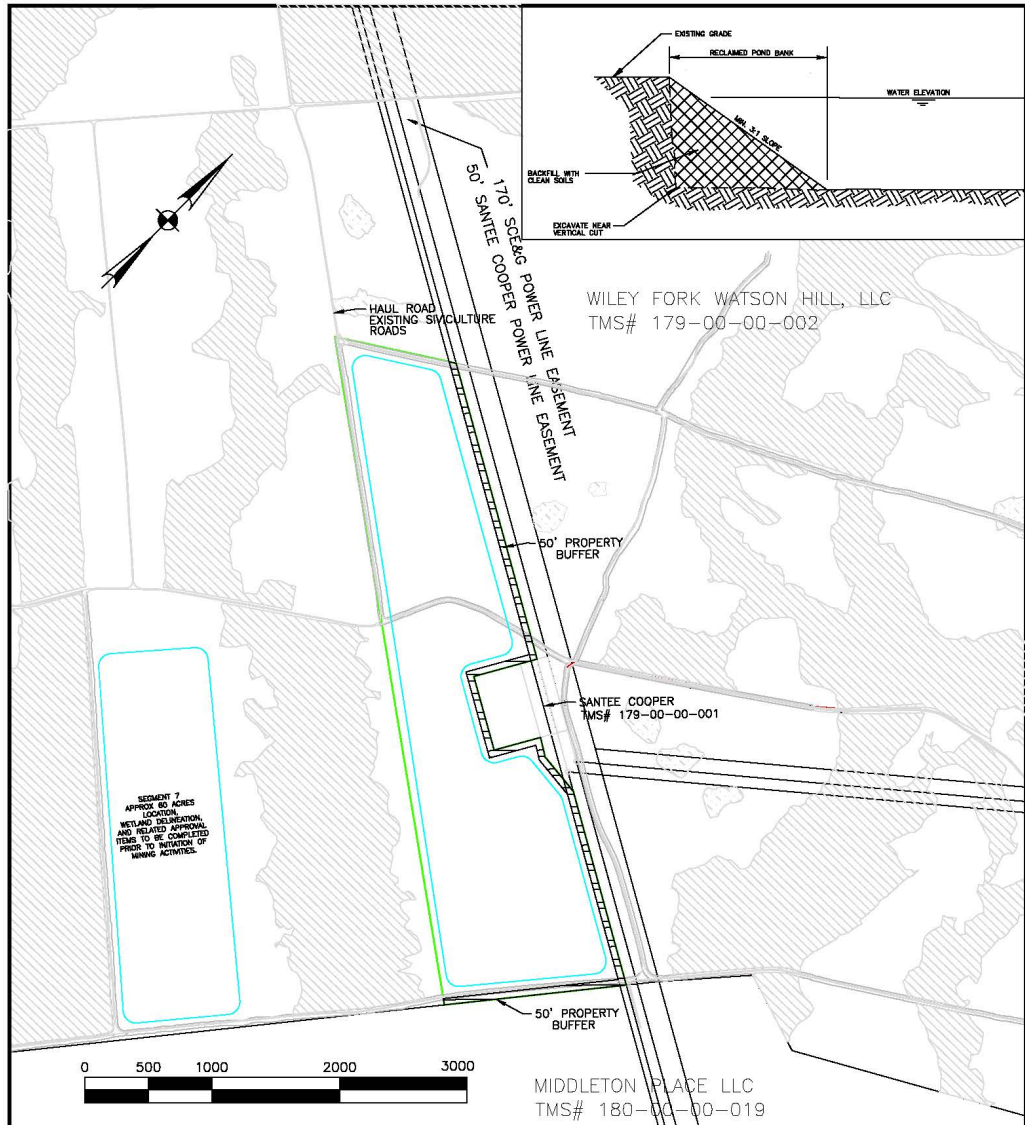
Sassafras Mine, North Charleston, SC
Sassafras Timber, LLC
14120 Ballantyne Corp. Place, Suite 525
Charlotte, NC 28277

←←←← DRAINAGE FLOW ARROWS

USACE JURISDICTIONAL WETLANDS (J)

NON-JURISDICTIONAL WETLANDS (NJ)





RECLAMATION MAP
PROJECT #: 01-4482 DATE: 07/10/20
CREATED BY: JRD REVISED: 03/01/21

Sassafras Mine, North Charleston, SC
Sassafras Timber, LLC
14120 Ballantyne Corp. Place, Suite 525
Charlotte, NC 28277



USACE JURISDICTIONAL WETLANDS (J)
NON-JURISDICTIONAL WETLANDS (NJ)

Common Concerns with Mine Operations

DHEC does not have authority to regulate:

- **Public roads (traffic/damage):**
 - SCDOT, SC Public Service Commission, City of North Charleston
Department of Public Works
 - Local Law Enforcement
- **Location/Operating Hours**
 - County and City Zoning Ordinances

Final Review

Comments Will Be Accepted By DHEC Through
NOVEMBER 5, 2021

At that time DHEC will:

- review all comments received
- request additional information from the applicant, if needed
- complete technical review of the proposed mine permit application
- determine if the proposed mine meets the requirements of:
 - Coastal Zone Consistency (CZC)
 - NPDES Water Discharge Permit
 - the SC Mining Act and regulations

Final Decision

- The Mining program will make a final decision as outlined by the SC Mining Act and regulations.
- Notification of the final decision will be provided:
 - To all attendees of public meeting and/or public hearing
 - To all who submitted written comments
 - On the DHEC webpage: <https://scdhec.gov/SassafrasMine>

Notification of the final decision will include a summary of concerns and how they were addressed. The final decision date beings 15-day appeal period.



Comments

Written comments may be submitted by mail or email through

NOVEMBER 5, 2021

to:

Wendy Hamilton
DHEC/BLWM
2600 Bull Street
Columbia, SC 29201
hamiltws@dhec.sc.gov

Additional information can be found at:

www.scdhec.gov/SassafrasMine



Questions?

Bureau of Land & Waste Management Division of Mining & Solid Waste Management

Joe Koon
Section Manager
803-898-1371
koonjm@dhec.sc.gov

Wendy Hamilton
Project Manager
803-898-1368
hamiltws@dhec.sc.gov

How to Participate

To indicate you would like to make a comment:

- Unmute your line
- Click the 'Hand Raise' icon



Hand Raise
(click this icon to indicate you would like to speak)



Muted
(no one in the hearing can hear you)



Unmuted
(everyone in the hearing can hear you)



If you have called into the hearing, press *6 to unmute

DON'T WAIT UNTIL IT'S TOO LATE.

Vaccination is the best way
to protect you, your family
and your community.



COVID-19 Vaccine Information Line
1-866-365-8110

www.scdhec.gov/vaxfacts