

Geographic Spread



South Carolina reported **sporadic activity** this week.



Influenza-Associated Hospitalizations and Deaths

This week **8** influenza-associated hospitalizations were reported by 22 hospitals. The cumulative hospitalization rate is **91.6** per 100,000. There were **0** laboratory-confirmed influenza-associated deaths reported this week. The cumulative mortality rate is **5.9** per 100,000. Compared to the previous week, the number of reported hospitalizations increased by **1 (14.3%)** and deaths **remained the same**. In the current flu season, there have been **4,544** influenza-associated hospitalizations and **292** influenza-associated deaths reported.



Virologic Surveillance

A total of **33** influenza cases (**32** positive rapid antigen detection tests; **1** lab-confirmed test) were reported from 10 counties representing all four DHEC Public Health regions. Influenza A was most frequently reported by clinical labs. Compared to the previous week, the number of reported influenza cases decreased by **6 (15.4%)** cases. In the current flu season, there have been **135,711** influenza cases (**132,117** positive rapid antigen detection tests; **3,594** lab-confirmed tests) reported.



Influenza-Like Illness Surveillance

The percent of patient visits to sentinel providers for an influenza-like illness (ILI) was **1.84%**, which is **below** South Carolina's baseline (**3.13%**). Compared to the previous week, this is an **increase** of **0.36%**.

The ILI activity level was **minimal**.

For a description of South Carolina's influenza surveillance components and definitions go to:

<http://www.scdhec.gov/Health/DiseasesandConditions/InfectiousDiseases/Flu/FluData/>

For national surveillance, please visit:

<https://www.cdc.gov/flu/weekly/>

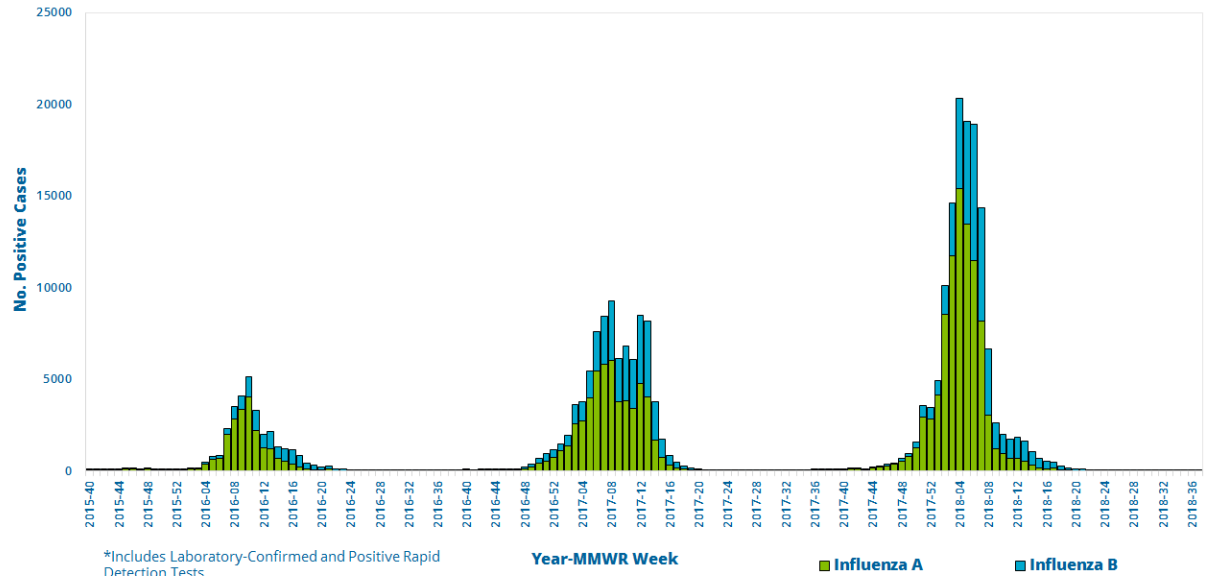


Virologic Surveillance

This week, **1** lab-confirmed case and **32** positive rapid influenza detection tests were reported by clinical labs.

Influenza A was most frequently reported by clinical labs.

Influenza Cases* Reported by Clinical and Public Health Labs, 2015-16 Season to Present



Influenza Cases Reported by Public Health and Clinical Labs, This Week and Season Total

| Influenza Type | Public Health Lab | | Clinical Labs | | Total | |
|------------------------------|-------------------|--------------------|-------------------|----------------------|-------------------|----------------------|
| | This Week | Season Total | This Week | Season Total | This Week | Season Total |
| Overall | 0 | 243 | 33 | 135,468 | 33 | 135,711 |
| Influenza A | 0 | 181 (74.4%) | 24 (72.7%) | 91363 (67.5%) | 24 (72.7%) | 91544 (67.5%) |
| A (H3) | -- | 139 (76.7%) | -- | 398 (0.4%) | -- | 537 (0.6%) |
| A (H1N1) | -- | 42 (23.3%) | -- | 171 (0.2%) | -- | 213 (0.2%) |
| A (not subtyped) | -- | -- | 24 (100%) | 90794 (99.4%) | 24 (100%) | 90794 (99.2%) |
| Influenza B | 0 | 62 (25.6%) | 9 (27.3%) | 43579 (32.2%) | 9 (27.3%) | 43641 (32.2%) |
| B (Victoria) | -- | 2 (3.2%) | -- | -- | -- | 2 (0.0%) |
| B (Yamagata) | -- | 55 (88.7%) | -- | -- | -- | 55 (0.2%) |
| B (lineage not performed) | -- | 5 (8.1%) | 9 (100%) | 43579 (100%) | 9 (100%) | 43584 (99.8%) |
| Influenza (not typed) | -- | -- | -- | 526 (0.3%) | -- | 526 (0.3%) |



Virologic Surveillance

Map of Influenza Cases (n)*
and Influenza Case Rate/100,000 By County
For Week Ending 9/15/2018



Weekly Influenza Case Rate per 100K

0 to 25 persons



26 to 50 persons



51 to 75 persons



Greater than 75 persons





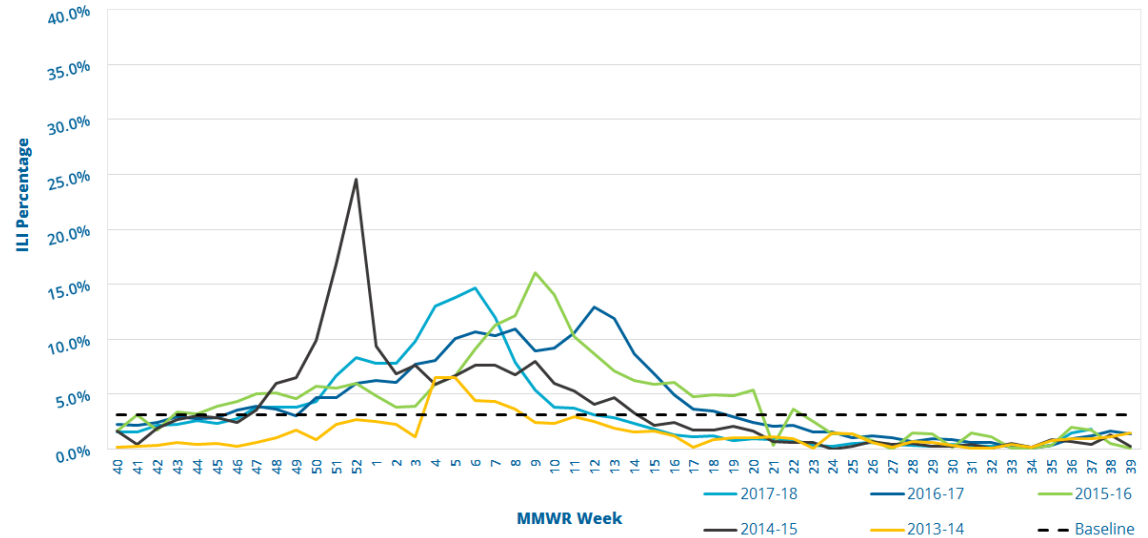
Influenza-Like Illness Surveillance

This week, the ILI activity level was **minimal** and **1.84%** of patient visits to SC ILINet providers was attributed to an influenza-like illness. This is **below** the state baseline, **3.13%**.

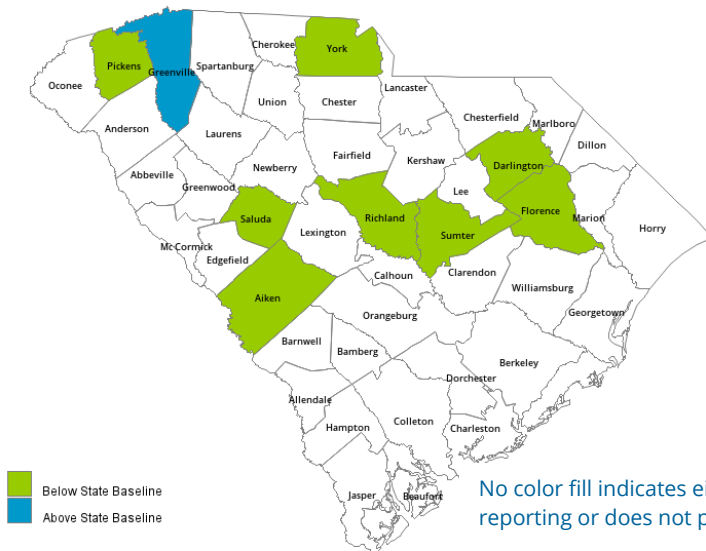
Reports were received from providers in 9 counties, representing 3 of the 4 DHEC Public Health regions.

ILI percentage is dependent upon the number of reporting providers and/or can vary by disease activity or the number of providers submitting reports.

Percentage of Influenza-Like Illness (ILI) Visits Reported by Sentinel Providers for Past and Current Seasons



County ILI Percent



State ILI Activity Level 2017-18 Calendar by Week of the Year

| OCT | NOV | DEC | JAN | FEB | MAR | APR | MAY | JUN | JUL | AUG | SEP |
|-----|-----|-----|-----|-----|-----|-----|-----|-----|-----|-----|-----|
| 40 | 44 | 48 | 1 | 5 | 9 | 14 | 18 | 22 | 27 | 31 | 35 |
| 41 | 45 | 49 | 2 | 6 | 10 | 15 | 19 | 23 | 28 | 32 | 36 |
| 42 | 46 | 50 | 3 | 7 | 11 | 16 | 20 | 24 | 29 | 33 | 37 |
| 43 | 47 | 51 | 4 | 8 | 12 | 17 | 21 | 25 | 30 | 34 | 38 |
| | | 52 | | | 13 | | | 26 | | | 39 |

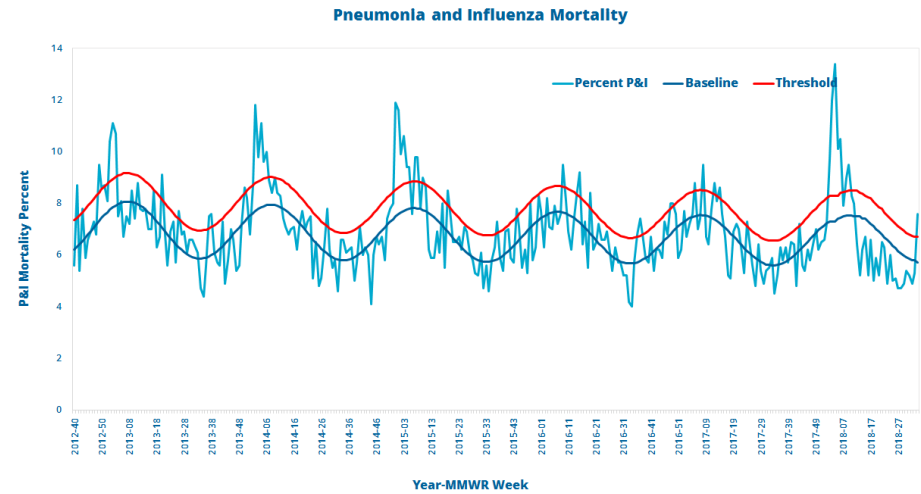
ILI ACTIVITY LEVELS: **MINIMAL** **LOW** **MODERATE** **HIGH**



Influenza-Associated Hospitalizations And Deaths

| Age Group | Hospitalizations | | | Deaths | | |
|------------|------------------|------------------|--------------|-----------|------------------|--------------|
| | This Week | Rate per 100,000 | Season Total | This Week | Rate per 100,000 | Season Total |
| 0 to 4 | 1 | 54.9 | 161 | -- | 1.0 | 3 |
| 5 to 17 | 0 | 17.7 | 142 | -- | -- | -- |
| 18 to 49 | 3 | 29.7 | 596 | -- | 1.3 | 27 |
| 50 to 64 | 1 | 116.3 | 1059 | -- | 5.7 | 52 |
| 65 & older | 3 | 409.3 | 2586 | -- | 33.2 | 210 |
| Total | 8 | 91.6 | 4544 | -- | 5.9 | 292 |

The percentage of deaths attributed to pneumonia and influenza was 7.6%. This is **above** the epidemic threshold for the week ending August 25, 2018.



Reported Influenza-Associated Hospitalizations by Age Group, 2015-16 Season to Present

