

SCCCR will be implementing a new process for facilities submitting data to use GenEdits with the SC Prep Plus editset to ensure that data being submitted is the most accurate as possible. This is a great learning tool to do some quality control on abstracts completed by abstractors at your facility and allows us to extend our efforts in cancer surveillance without reviewing additional edits on submitted cases. Please complete the following steps:

1. Once you have exported the file that you are going to submit to SCCCR, open the GenEdits application and browse to locate the exported file
2. Verify that you have selected the "SC Prep Plus" editset
3. Run the edits on the file and review the GenEdits Summary and Details reports

The GenEdits report results will have two types of edits. These edits are described below as **Edit Warnings** or **Edit Errors**. These edits/warnings will be valid for cases diagnosed between 2018-2021. Please note the edits will be adjusted to include the 2021 edits within the year.

4. Correct all edits errors
5. QC all edit warnings: (1) correct, if needed, (2) if no corrections are needed, justify in text
6. Export updated cases and run through GenEdits
7. Repeat until the file is clear of edit errors and all edit warnings have been addressed in text

EDIT WARNINGS:

When an *edit warning* is triggered, this edit, and all related data fields must be reviewed for accuracy. Correct any data fields that have inaccurate information. If no corrections are needed, provide justification in text to support why the information is correct for this case. Export all updated abstracts to WebPlus and re-run through GenEdits. The submission file can be uploaded through Web Plus with Edit Warnings *but there must be supporting text to verify the data field coding that generates the Edit Warning*. There is an attachment with a list of edits and edit warnings that are included within GenEdits. Unknown or 9's should be used as a last resort for any data field. When you are abstracting an 'analytic' case; there is no reason to have an NOS solid tumor site, unknown stage, or unknown first course of therapy.

EDIT ERRORS:

If an edit is not listed in the Edit Warning list, this is to be considered an Edit Error. Cases with edit errors will not have an override option. All edit errors will require review and will need to be corrected prior to uploading into Web Plus. This may require updating several data items. Export all updated abstracts to WebPlus and run through GenEdits.. Using Unknown should be a last resort. There is an attachment with a list of edits and warnings that are included within GenEdits. Repeat this process until all edit errors are cleared. [edits](#)

EDIT AWARENESS:

The following are some SCCCRC Common edits identified when processing uploaded cases from facilities:

SEER Rx Date/ SEER Rx Flag: Date of Initial Rx SEER – This date should be left blank when:

- When no treatment is given during the first course
- When Treatment Status is coded 2, Active surveillance/watchful waiting
- When it is known the patient had first course therapy, but it is impossible to estimate the date
- When it is unknown whether the patient had treatment
- For DCO (death certificate only) cases when the date is unknown and cannot be estimated
- Autopsy only cases

You can find more information on this topic:

https://seer.cancer.gov/archive/manuals/2018/SPCSM_2018_maindoc.pdf

If this data field is left blank unnecessarily you will receive an edit that will need to be rectified prior to submission.

EOD Primary Tumor – This must reflect the extension of the tumor within the pathology report. This should also reflect localized or more extension in the SEER Summary Stage. This will be considered an edit that needs to be rectified prior to submission.

EOD Nodes – This must reflect the extension to nodes or no extension to nodes. This should also reflect in the SEER Summary Stage.

EOD Mets – This must reflect whether there is metastatic disease. This should also reflect in the SEER Summary Stage.

When receiving a warning for extended treatment (greater than 240+ days), the treatment plan or rationale for extended time of treatment must be noted within the text of treatment. For example: Breast cancer – patient received adjuvant treatment x 2 mo., surgery 3 months after diagnosis, radiation 3 months after surgery (would equal approx. 240 days, and then hormone treatment) Was radiation in the initial treatment plan to be included within the first course of treatment. We must be able to justify the extended time of treatment.

State of Death – will be a warning if left blank. If you have access to the death certificate, please list the state of death. This information can often be obtained by looking up the obituary on various search engines on the internet.

Clinical Stage Group can not be left blank. If there is not enough information to determine the stage group 99 must be entered.

Pathologic Stage Group can not be left blank. If there is not enough information to determine the stage group 99 must be entered.

Primary Site/Histological Type should be verified within the solid tumor rules or hematopoietic database to determine appropriate histology's per site. For example: If there is a lung primary and the histology is 8046. The documentation must be clear that there is not any additional information to determine a more definitive histology.

Lymphovascular Invasion must = 8 for histologic types 9590 – 9992.

Meningioma primary site will have a warning attached to make sure that the correct site code is used.

NO text in a text box: If there is no information for that specific text box, "NONE" should be entered. If that specific text box is not applicable "N/A" should be entered. The SCCCR conducts manual review on the codes/data abstracted there must be text to support the data fields. The SCCCR DOES NOT have access to patient records to look this information up. **ANYTHING YOU CODE SHOULD BE JUSTIFIED WITHIN THE TEXT FIELDS.**

CONTACT INFORMATION:

If you need assistance installing GenEdits or have questions on how to use the GenEdits application, please contact:

Michael Castera

casterma@dhec.sc.gov

(803) 898-0353

If you have questions regarding edits or any quality control related questions, please contact:

Connie Boone

(803)898-0985

boonecr@dhec.sc.gov

SCCCR Data Submission File Guidance

Please use the following instructions to download the GenEdits software.

GenEdits Link: <https://www.cdc.gov/cancer/npcr/tools/edits/edits50.htm>

Scroll down the web page until you see the following:

Installation Instructions for GenEDITS Plus 5

Enhancements from version 4 to version 5—

- Integration with EditEngine v5.0 (EDITS50.dll), leading to improved performance.
- Multiple Document Interface (MDI) support for managing multiple configurations simultaneously.
- Quick access to user configuration properties and report setup options.
- Expanded features for configurations – comments, display names, and imported/exported configurations.
- Expanded functionality for interacting with edits – viewing edit properties and testing edits.
- Separation of edits functionality into application and library-level features.

Latest Release


November 2, 2020 (5.1.0.64)

- Includes an updated XMLExchangePlus.dll (in part, improves processing of user defined fields).
- Corrects layout error that would occur if a user selected a data file first and then changed the record layout.
- Includes NAACCR v21A metafile.

GenEDITS Plus 5 was developed in .NET and requires version 4.5.2 of the .NET framework. If you do not already have the .NET framework installed, contact your local IT staff for support.


Download GenEDITS Plus 5, [setup_geplus5_32bit_02Nov2020.zip](#) (compressed file, 45.8 MB, November 2, 2020) to your Windows desktop or another location. Unzip and double-click on setup.exe to begin the setup program. If someone else is responsible for maintenance of your computer, you may not be able to install software. In this case, consult the maintainer of your computer for assistance. Instructions for using GenEDITS Plus are in the Help document installed with the program.

Click on the [setup_geplus5 32 bit 02Nov2020.zip](#) link and save the executable file to a location on your computer or if you facility allows installation of applications on a server you will save the file to a network drive location. After you save the file you will need to double click on the setup file to install the software.

 GenEditsSetup

Windows Installer Package

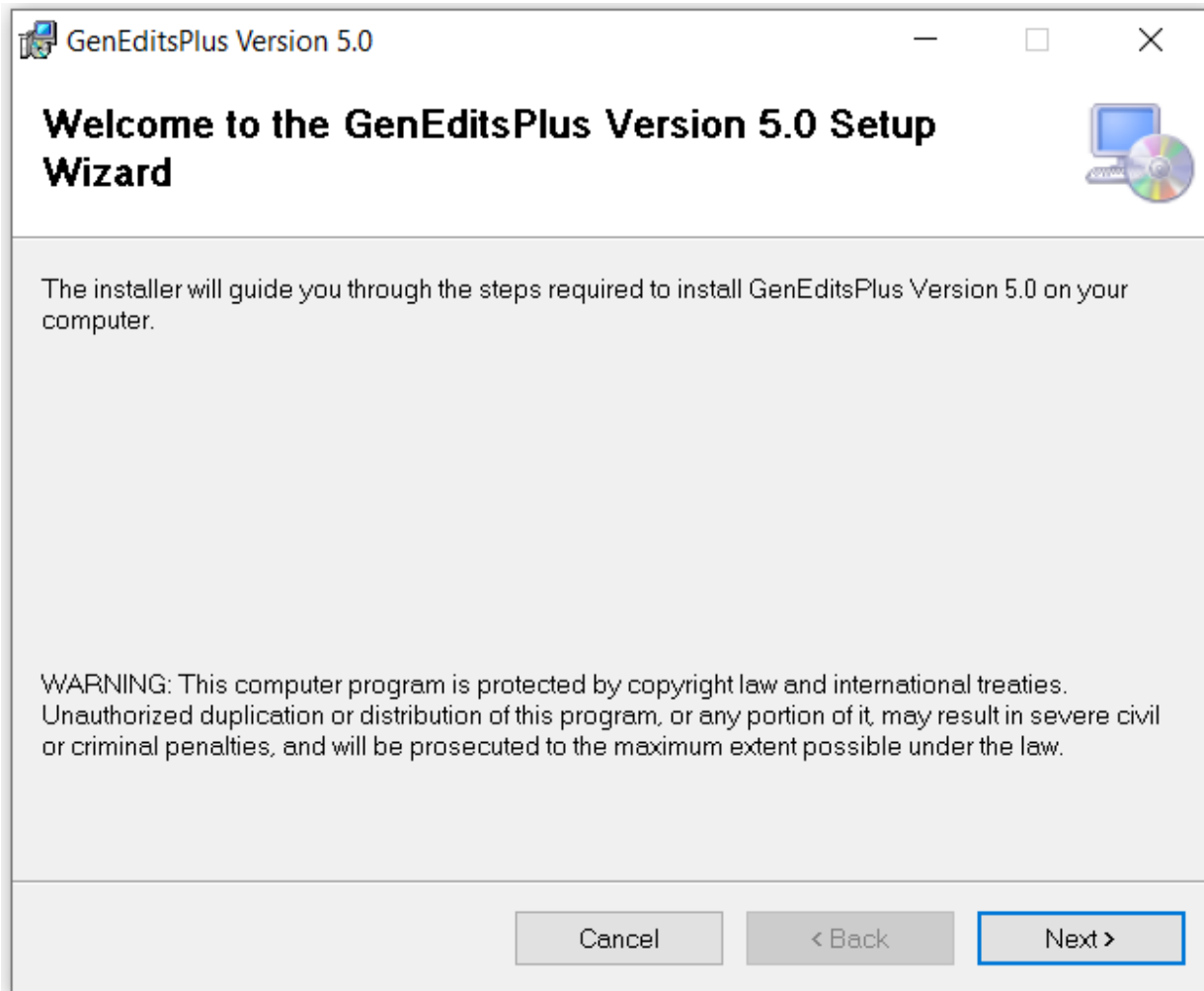
27,317 KB

 setup

Application

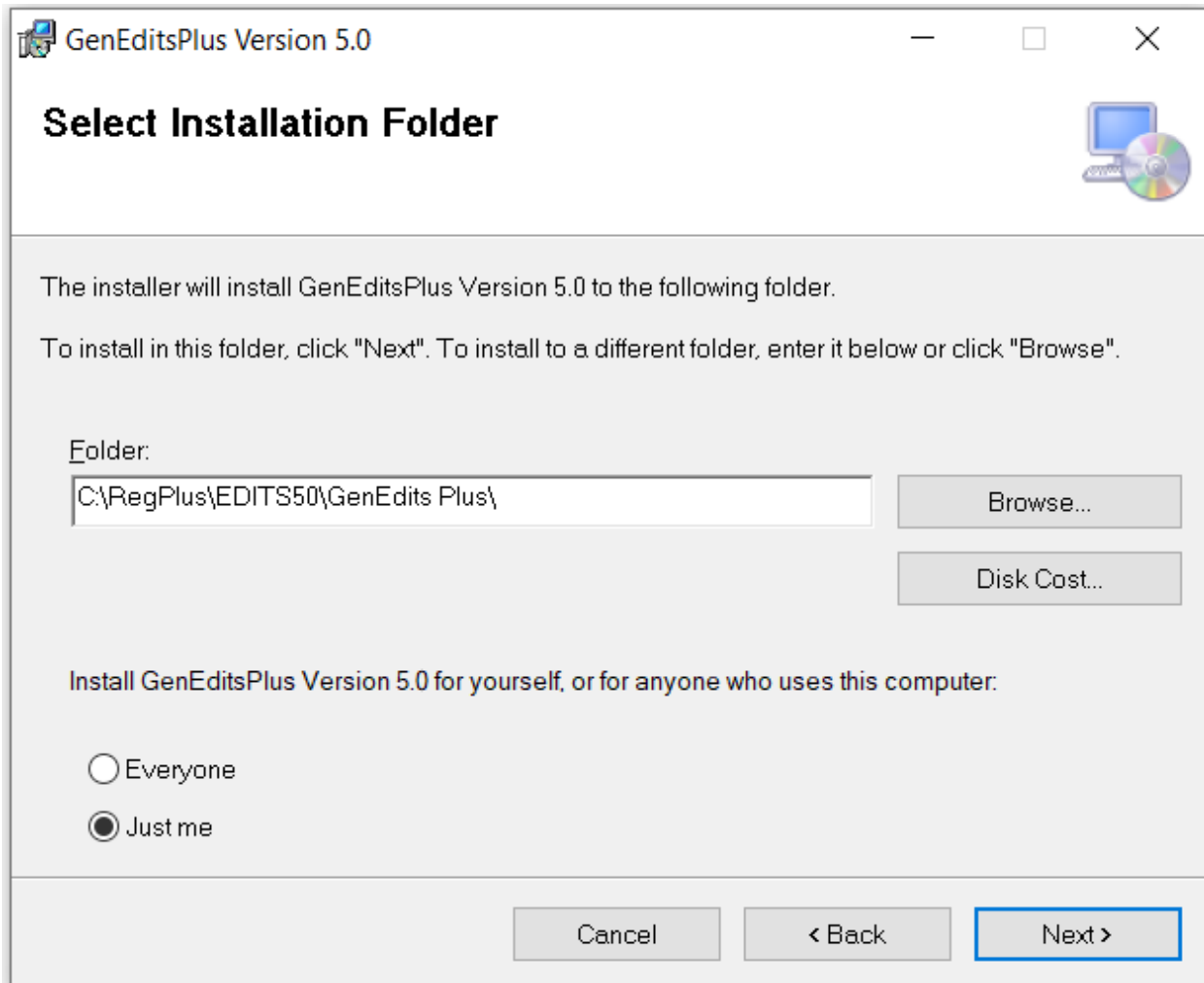
230 KB

You should get the following prompt message box



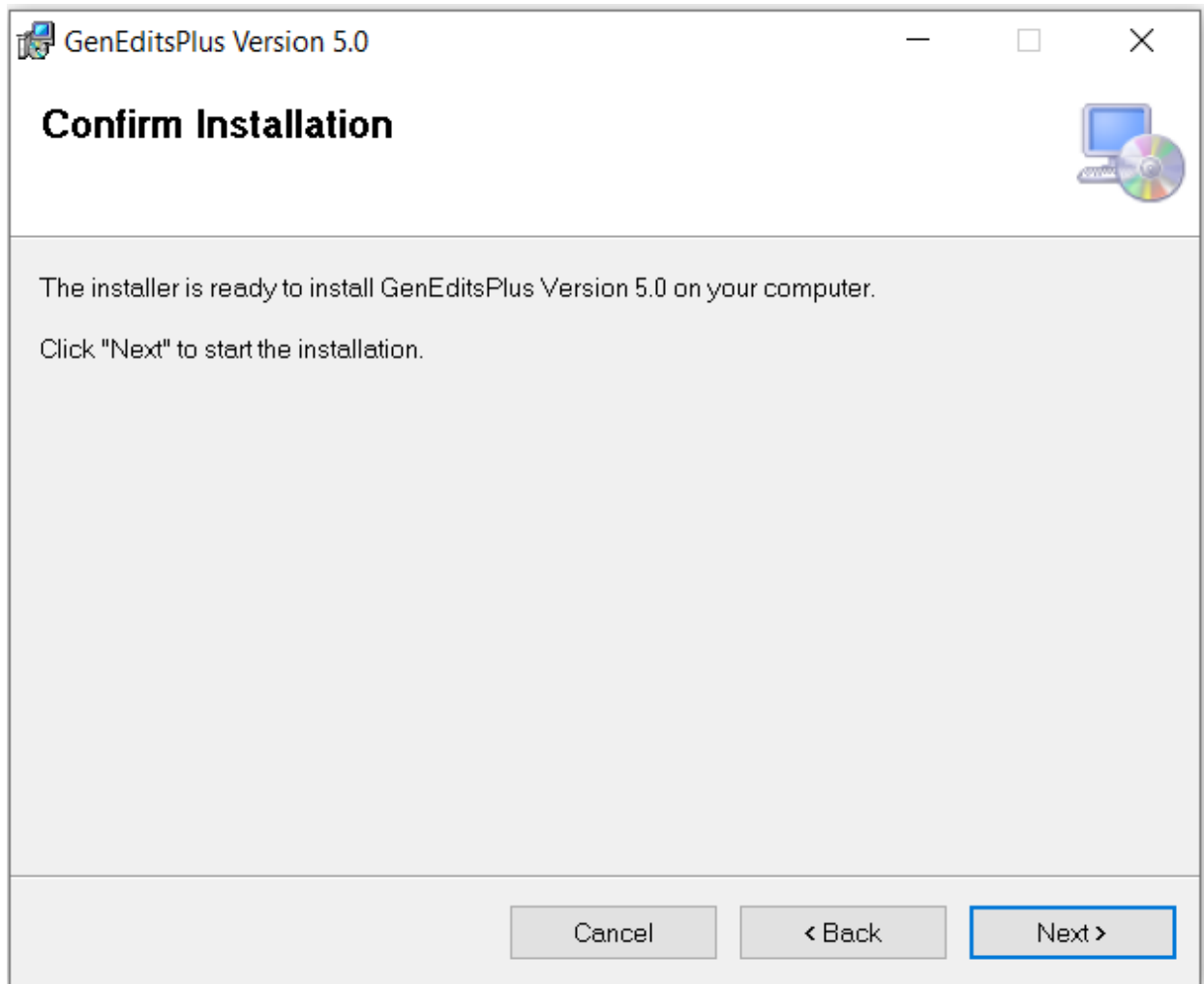
Click the Next button

You can either choose to install the software in the default C: drive location or click on the Browse button to select a location on your computer to install the software.



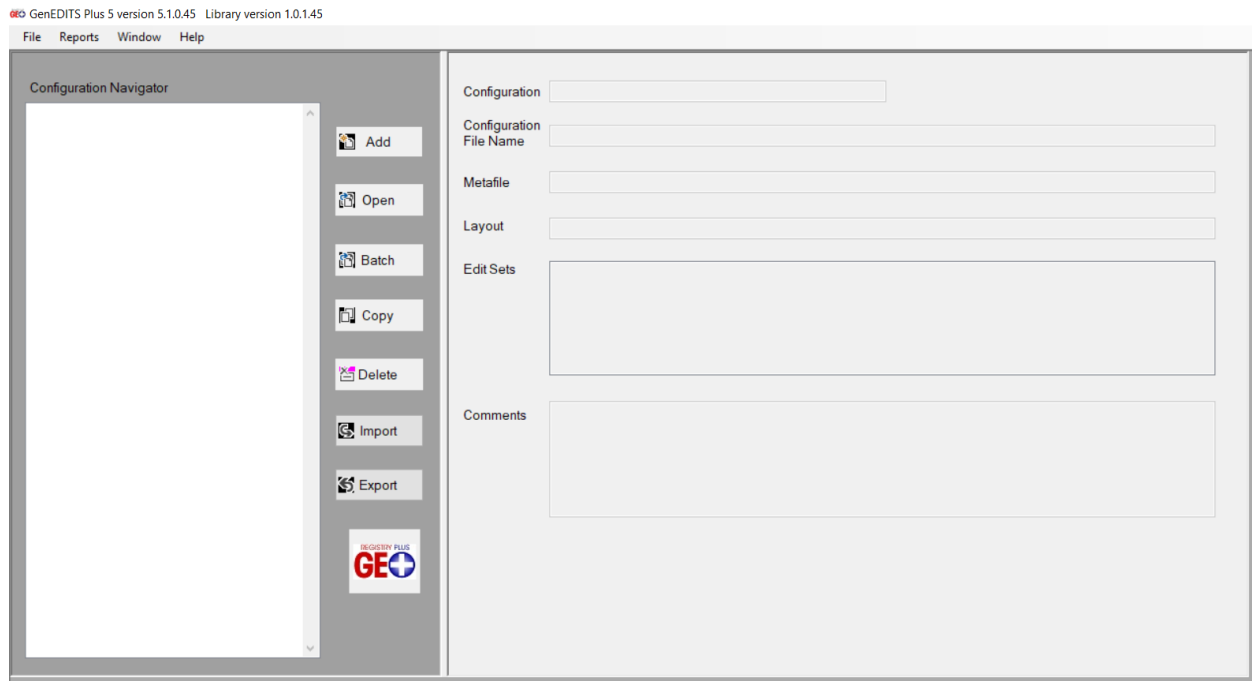
Once you have selected the Folder location where you want to install the software click on the Next button.

Click on the Next button.



The GenEdits software should have installed successfully. You should have an icon on your computer desktop unless you installed the software to a different location other than the default location. If you saved the installation files to a different folder location you will need to go to that folder and double click on the executable file to open the GenEdits application.

Once you open GenEdits you will see the following screen:



You are now ready to create a New Configuration to use the SCCCR state specific edits metafile. You will click on the File (Upper left hand corner) option and select New Configuration.

You should see this screen:

New configuration

File Reports

Metafile Name Browse

Record Layout

Edit Sets

Datafile Name Browse

Configuration File Name

Configuration Name

Comments

Run Edits Report Identifiers Report Setup Edit Options Data Display

Record Type NAACCR Version Record Count

Edit Set Options

Skip Empty Skip Failed Suppress Warnings

Start editing at record Stop editing after record

Report Counts Only Detailed Error Limit

Progress Run Edits

Records Processed Errors Reported

Records With Errors Time Remaining

Edit Sets

SCCCR will need to send you the state specific edits metafile through Web Plus. Once you download that file and save it to folder location on your computer you will need to click on the Browse button to select the Metafile Name. The metafile name is **SC_v21A_20201011_XML.smf**

Once you select the metafile the screen should have the following:

Record Layout: **NAACCR v21 XML (RP-8) (NPCR)**

The screenshot shows the PrepPlusV21 application window with the following configuration:

- Metafile Name:** C:\NAACCR V21A\SC_v21A_20201011_XML.smf
- Record Layout:** NAACCR v21 XML RP-8 (RP_8) (NPCR)
- Edit Sets:** SC Prep Plus
- Datafile Name:** (Empty)
- Configuration File Name:** C:\RegPlus\EDITS50\GenEdits Plus\Config\PrepPlusV21.cfg
- Configuration Name:** PrepPlusV21
- Comments:** (Empty text area)

The **Run Edits** tab is active, showing the following options:

- Record Type:** (Empty)
- NAACCR Version:** (Empty)
- Record Count:** (Empty)
- Edit Set Options:**
 - Skip Empty
 - Skip Failed
 - Suppress Warnings
- Start editing at record:** (Empty)
- Stop editing after record:** (Empty)
- Report Counts Only
- Detailed Error Limit:** (Empty)
- Progress:** (Empty)
- Run Edits:** (Highlighted button)
- Records Processed:** (Empty)
- Errors Reported:** (Empty)
- Records With Errors:** (Empty)
- Time Remaining:** (Empty)

The **Edit Sets** list on the right includes:

- AJCC Edits for 2018 (NES0500) (NAACCR)
- Blank TNM Fields Edits (NES0349) (NAACCR)
- Canadian Council of Cancer Registries - vs18 Edits (NES0127)
- Census Tract, County GC Codes (NES0348) (NAACCR)
- Central: Vs21 NPCR Required - Consol-All Edits (NES0149) (NF)
- Central: Vs21 State Example - Incoming Abstracts (NES0150) (NF)
- Early Detection Program Edits (NES0278) (NPCR)
- EOD Edits for 2018 (NES0501) (NAACCR)
- Extent of Disease Edits (NES0013) (NAACCR)
- Hosp: Vs18 COC Required Confidential (NES0015) (COC)
- Hosp: Vs18 COC Required Non-Confidential (NES0126) (COC)
- Hosp: Vs21 COC Required - All (NES0095) (COC)
- Hosp: Vs21 COC Required - All+CS (NES0344) (COC)

You will need to select the SC Prep Plus Edit Set. Scroll down the box in the lower right hand corner until you see the SC Prep Plus edit and check the box beside that edit set name.

SOUTH CAROLINA CENTRAL CANCER REGISTRY FILE SUBMISSION EDITS GUIDANCE

When you check the box beside the SC Prep Plus (SCE0352) (SCCCR) edit set the name of the edit set should show up in the Edit Sets field.

After you have the edit set selected you will want to use the Browse button for the Datafile Name to select the data submission file that you want to run edits on.

Once you have the datafile name selected you will want click in the box for Configuration Name and name the configuration **SCCCR Data Submission** so that when you go to run the next file through GenEdits you can just select that configuration and not have to create a New Configuration.

You are ready to run the edits on your data submission file. Click on the Run Edits button and run the edits. When the edits have ran on the datafile Genedits will create two edit reports that you can use to identify any abstracts that need to be corrected and the data file ran back through GenEdits again before uploading in Web Plus.

If you have any questions regarding installing or using GenEdits please contact Michael Castera, CTR email address: casterma@dhec.sc.gov

EDIT AWARENESS

DATE INITIAL RX SEER		EDIT
DATE INITIAL RX SEER FLAG		EDIT
PLACE OF DEATH - STATE		EDIT
EOD PRIMARY TUMOR		EDIT
EOD METS		EDIT
SUMMARY STAGE 1/EOD TUMOR/EOD REG NODES:000		EDIT
SUMMARY STAGE 3/EOD TUMOR: 100		EDIT
VISCERAL/PARIETAL PLEURAL INV: 2 - EOD TUMOR 300		EDIT
BIRTHPLACE - COUNTRY		EDIT
SEPARATE TUMOR NODULES 1/EOD TUMOR 300		EDIT
GLEASON PATTERN CLIN : RX SUMM - DX/STG PROC		EDIT
GLEASON SCORE CLIN : RX SUMM - DX/STG PROC		EDIT
NUMBER OF CORES POSITIVE : RX SUMM - DX/STG PROC		EDIT
NUMBER OF CORES EXAMINED : RX SUMM - DX/STG PROC		EDIT
SUMMARY STAGE 2018 1 : EOD PRIMARY TUMOR 050		EDIT
RX DATE CHEMO, DATE DX 240+		EDIT
HISTOLOGIC TYPE 9590 - 9992, LVI MUST = 8		EDIT
TNM CLIN STAGE GROUP		EDIT
TNM PATH STAGE GROUP		EDIT
Text - Lab Tests		EDIT
Text - Operative		EDIT
Text - Pathology		EDIT
Text - Physical Exam		EDIT
Text - Scopes		EDIT
Text - X-ray/Scan		EDIT
Text - Place of Diagnosis		EDIT
Text - Staging		EDIT
Summary Stage 2000, Histology ICD03		EDIT
Summary Stage 2000, Laterality		EDIT
Summary Stage 2000, Reg Nodes Pos		EDIT

EDIT WARNINGS

PRIMARY SITE/HISTOLOGY TYPE (34.0 - 34.9) 8046		WARNING
MENINGIOMA PRIMARY SITE		WARNING
Rx Date BRM, Primary Site +365 days		WARNING
Rx Date Chemo, Date DX + 240 days		WARNING
RX Date Chemo, Primary Site, Date DX +365 days		WARNING
RX Date Hormone, Date DX + 240		WARNING
RX Date Hormone, Primary Site, Date DX + 365 days		WARNING
RX Other, Date DX + 240 days		WARNING
RX Other, Primary Site, Date DX +365 days		WARNING
RX Date Radiation, Date DX + 240 days		WARNING
RX Date Radiation, Primary Site Date DX + 365 days		WARNING
Systemic Rx, Surgery, Systemic/Surg Seq		WARNING
SSDI for Brain, CNS		WARNING
SSDI for Breast		WARNING
SSDI for Colorectal		WARNING
SSDI for Liver & Biliary		WARNING
SSDI for Melanoma of skin		WARNING
SSDI for Prostate		WARNING
Unknown/III-defined Site, Summary Stage 2018		WARNING
Breast Infiltrating Ductal Carcinoma = 8500/3		WARNING
Low Grade Serous Carcinoma - 8460		WARNING
High Grade Serous Carcinoma - 8461		WARNING
Acinar adenocarcinoma (C61.9 ONLY) [DO NOT USE 8550/3 OR 8551/3 FOR PROSTATE] [2018+]		WARNING
C64.9/Histology for Renal Cell/Clear Cell Carcinoma = 8310/3		WARNING
Solitary Plasmacytoma of Bone = 9731/3		WARNING
Thyroid, Papillary Adenocarcinoma = 8260/3		WARNING
EOD, Tumor Size, Reg Nodes, Site, ICD03		WARNING
Histology 8077, Behavior = 2		WARNING
Pituitary Gland, Adenoma Histology = 8272/0		WARNING